



The impact of a need.

University of Texas at Arlington

UTA Student Access and Resource Center
DIVISION OF STUDENT AFFAIRS

*Deaf is used interchangeably to refer to anyone who identifies as Deaf or Hard of Hearing or has any form of hearing loss necessary to utilize the program.



Deaf Student Mentor

*UTA Student Resource & Accessibility
Office*

Table of Contents

01 Meet the team

02 Demographics

03 How it all started...

04 Timeline

05 Advertising

06 Training

07 UTA and Beyond

08 Q&A



Meet the team



Lei-Sea Sky
Deaf Student Mentor



Tiffani Riddick
Deaf & Hard-of-Hearing
Coordinator



Deon Harrell
Sign Language
Interpreter



Meet the team



Joshua Finley
Accessibility Specialist



Cindy Berry Lowery
SAR Director



Emily Hartzell
Sign Language
Interpreter



Demographics

College

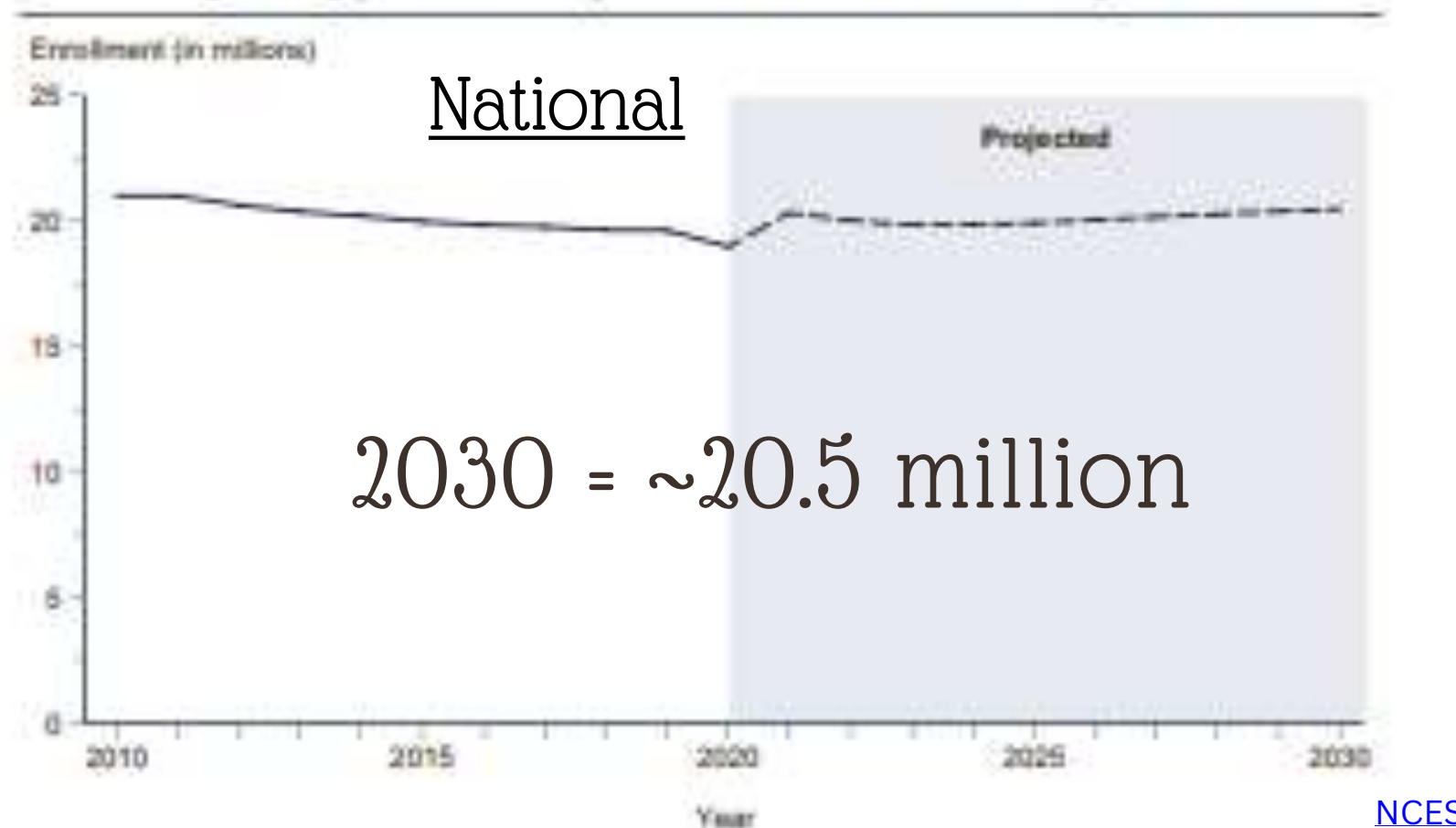
enrollment

Total Student Population
as of 2022

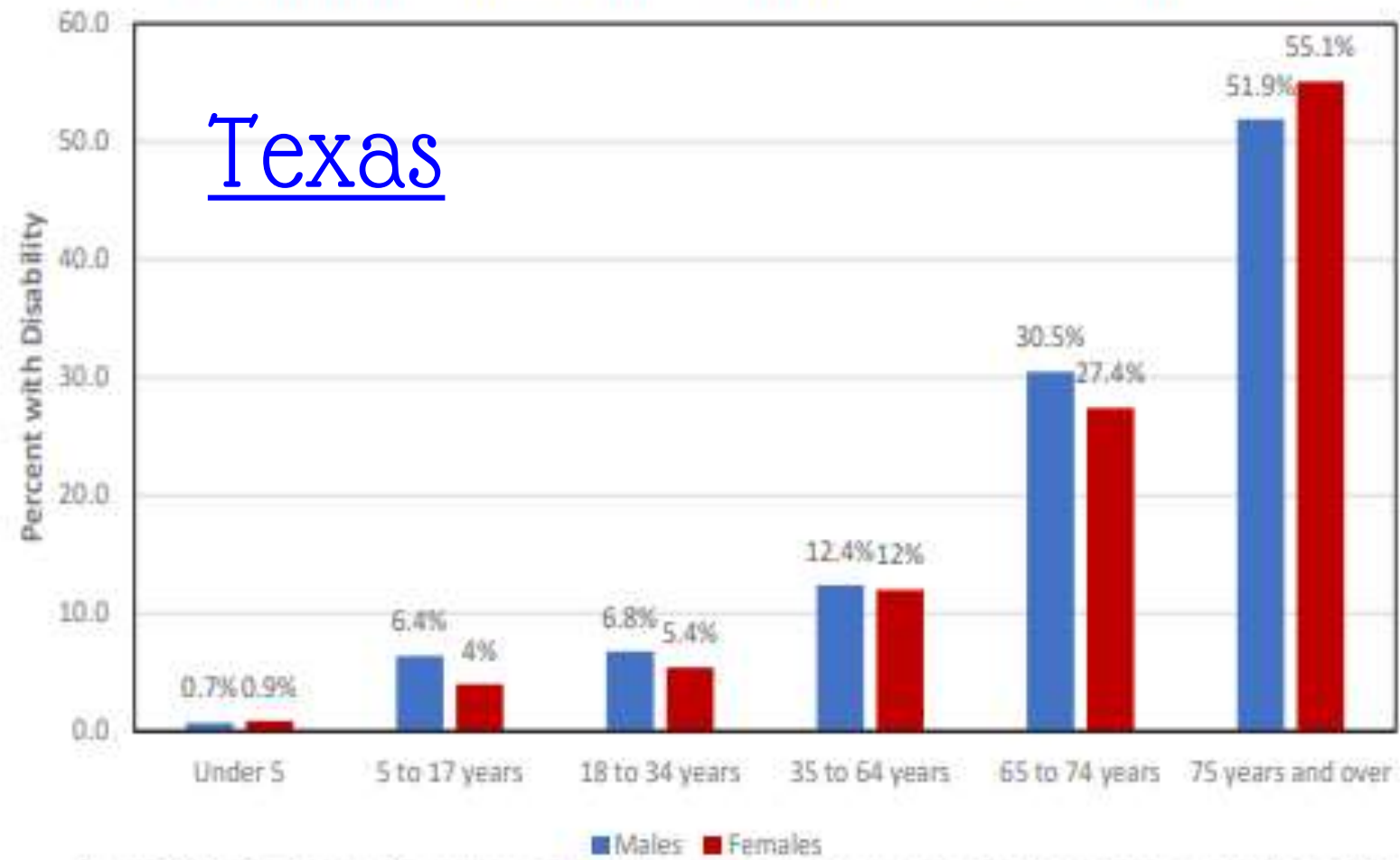
1,195,002

Texas

Figure 16. Actual and projected numbers for total enrollment in all degree-granting postsecondary institutions: Fall 2010 through fall 2030



Percent of Individuals with Disabilities by Age and Gender in Texas



Texas

Source: 2017 ACS microdata. Percentages indicate the portion of men and women in each age category reporting a disability.

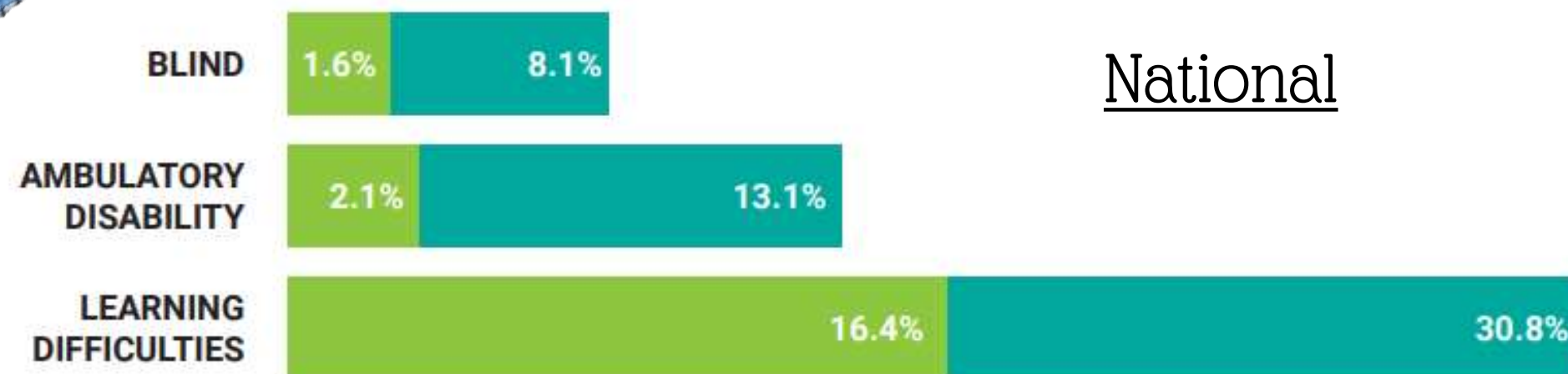
College students with disabilities.



Among college students enrolled in the academic year of 2015-2016, 19.5% had a disability. Of this group, 3.9% were deaf (U.S. Department of Education, 2019).

Figure 3

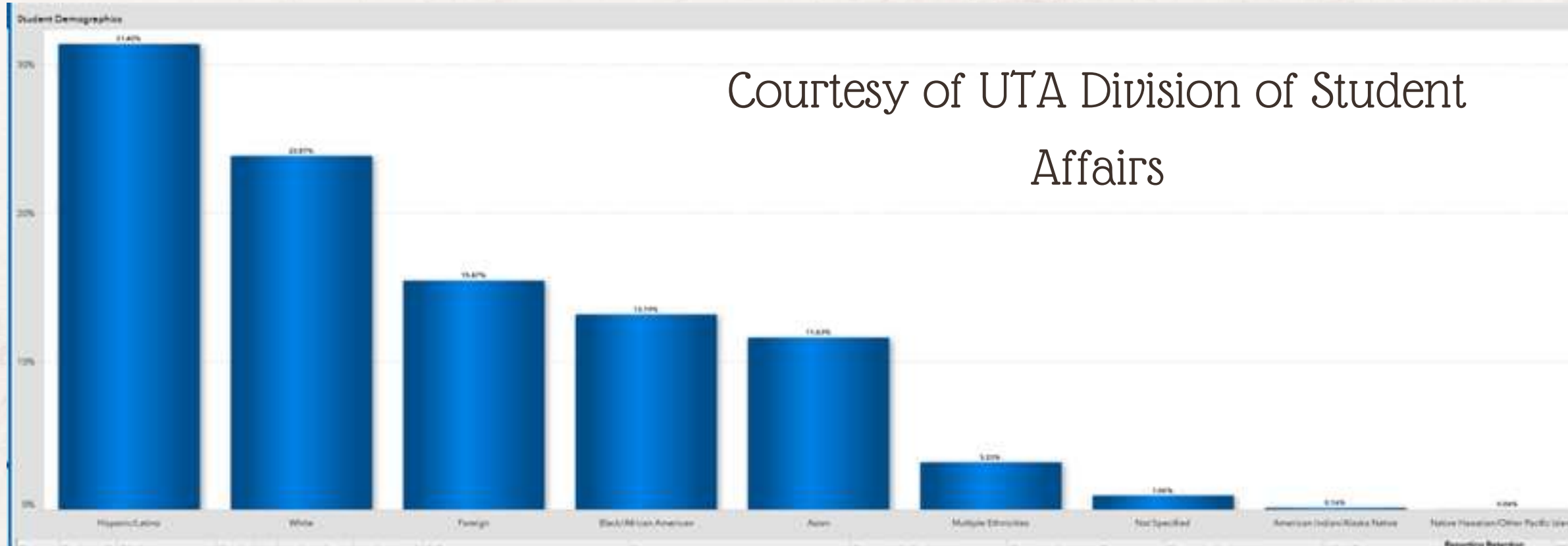
ADDITIONAL DISABILITY STATUS OF CURRENTLY ENROLLED STUDENTS



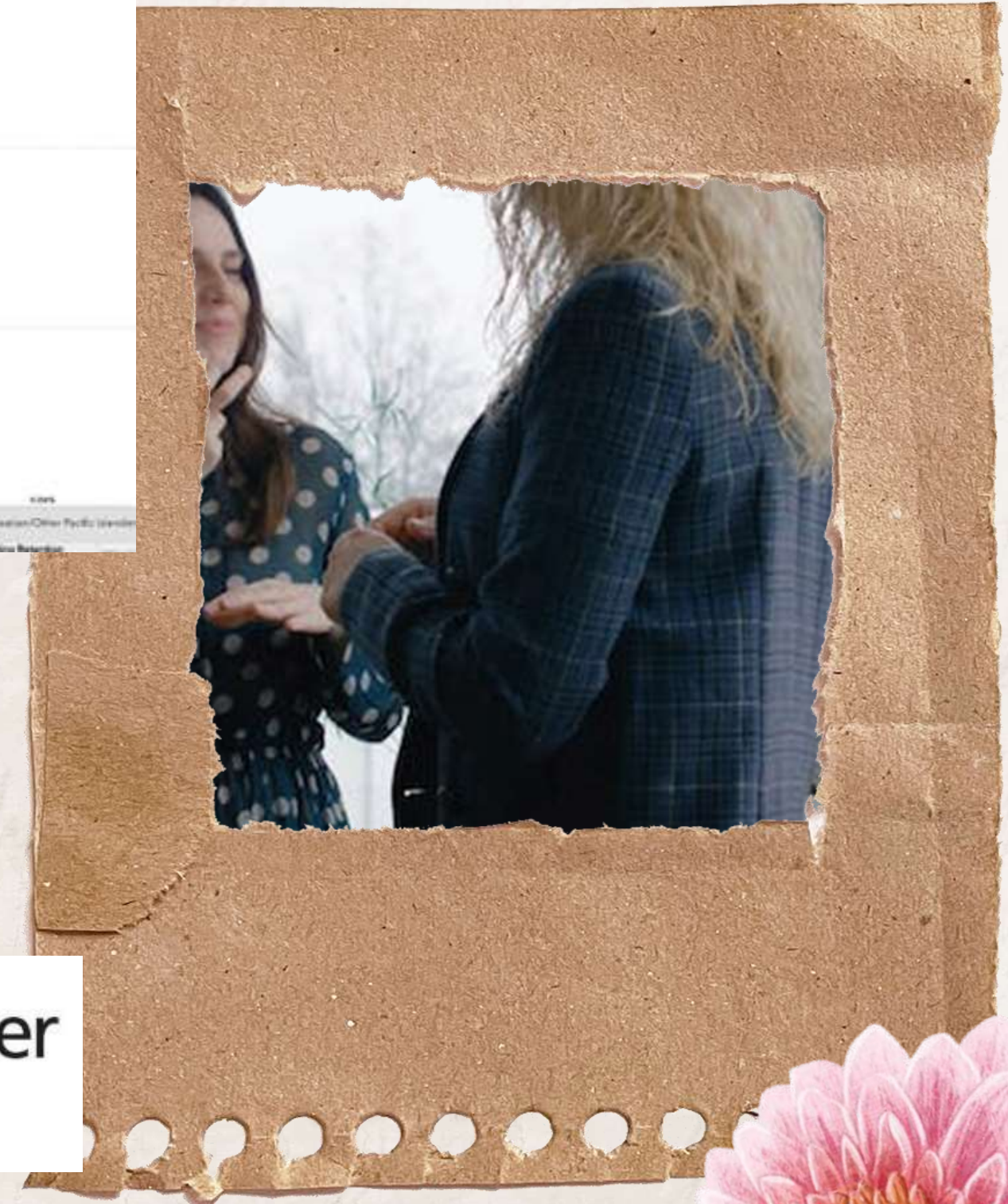
National



Courtesy of UTA Division of Student Affairs



Fall 2023 = 45,054



Student Access and Resource Center
DIVISION OF STUDENT AFFAIRS

SAR Students = 2,178

Identify D(d)eaf or HoH = 75



How it all started...

- Deaf Student Perspective

34.2 hours per class

CLASS TIME (1.2)

One hour and twenty minutes of watching an ASL Interpreter and missing key information if implied clues are directed to materials.

PROCESSING (3)

Note-taking from all the previous elements.

POST CLASS TIME (24 / 2)

CART (Communication Access Real Time) reading an average of 20-30 pages of transcription of the class.

CLASS MATERIALS (0.5)

References to PowerPoints or Documents with even minimal verbiage without allowing adequate time for reading before proceeding; videos without, or with subpar captioning.

STUDY TIME (3.5)

Average three and a half hours of study time to review and understand the course.



Timeline

Recognizing challenges to access.

FALL 2022

2022

Transfer student to UTA

Project Management and initial development of Deaf Student Mentor project under the SAR Center

SUMMER 2023

SPRING 2023

IDEA Fellow

Continued development of program and projected first Deaf Day @ UTA annual event

SPRING 2024

FALL 2023

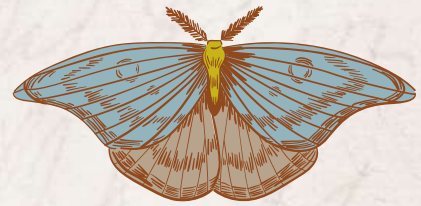
Official position creation and implementation of Deaf Student Mentor

Deaf Student Mentor Program provides proof of necessity, and sustainability.

FALL 2024

SUMMER 2024

Internship position for next Deaf Student Mentor





Deaf Student Mentor

What?

Do you identify as D(d)eaf/Hard-of-Hearing?
Do you utilize ASL Interpreter, CART,
captioning, or Note-Taker services through the
SAR Center?
Do you want additional support to be able to
access everything that UTA has to offer?

How?

Scan this QR code to
fill out our intake form
or contact either
Tiffani Riddick at
tiffani.riddick@uta.edu
or Lei-Sea Sky at
leisea.sky@uta.edu for
more information.





The Deaf Experience



Tips for interacting with the student

- Do not alter your speech pattern, instead, consider rephrasing.
- Do not shout or over enunciate. Repeat questions asked from the back.
- Ask open-ended questions.
- It is okay to gently tap a deaf person to get his or her attention.
- Please alert the person to an emergency.
- If you are unsure, text, use paper and pencil.
- If you need an interpreter call ext. 2-3364. Try to allow at least 5 business days notice when possible.

Working with the Interpreter

- Speak directly to the student. Do not direct questions to the interpreter.
- Do not say “tell/ask him/her”
- Allow the interpreter to be positioned in an area out of direct sunlight and away from a distracting background.
- In a classroom or presentation setting, be cognizant of “lag time” when asking questions.
- The Interpreter’s objective in the classroom is to facilitate communication for the Deaf/Hard of Hearing student- they are not teacher aids

Classroom Environment

- Deaf students take in all classroom information with their eyes.
- It is hard to pay attention to slides and the interpreter at the same time.
- Everything spoken or signed will be communicated.
- Dim the lights. Do not turn them off.
- Remember Deaf students take in information with their eyes. They must see the interpreter
- Email or post handouts and slides ahead of time.
- Please be conscious of spontaneous group work and unnecessary moving during class.
- Allow the student to review visual material before class for them to follow along better.



UTA and beyond



Texas Higher Education Code

The Certificate of Deafness for Tuition Waiver (CODTW) program provides a certificate that students can submit to public colleges, universities, and technical schools in Texas as a request to waive their tuition. Applicants for a CODTW must complete Form 3900 and be at least 17 years old.

UT System academic institutions:

[The University of Texas at Arlington](#)
[The University of Texas at Dallas](#)
[The University of Texas Permian Basin](#)
[The University of Texas at San Antonio](#)
[The University of Texas at Tyler](#)

[The University of Texas at Austin](#)
[The University of Texas at El Paso](#)
[The University of Texas Rio Grande Valley](#)
[Stephen F. Austin State University](#)

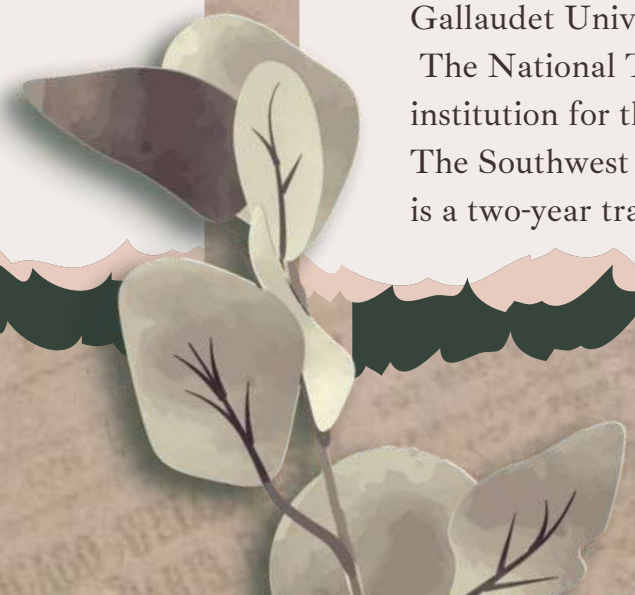
UT System health institutions:

[The University of Texas Southwestern Medical Center](#)
[The University of Texas Medical Branch at Galveston](#)
[The University of Texas Health Science Center at Houston](#)
[The University of Texas Health Science Center at San Antonio](#)
[The University of Texas MD Anderson Cancer Center](#)

Deaf Institutions.

Gallaudet University in Washington, DC is the only Liberal Arts university for Deaf students. The National Technical Institute for the Deaf (NTID) in Rochester, New York is the technical institution for the Deaf.

The Southwest Collegiate Institute for the Deaf (SWCID or Howard College) in Big Spring, Texas is a two-year trade college for the Deaf.





Thank
you

